



Hummingbird

Medical Workstation on Wheels



All-In-One,
LCD, or Tablet



Powered



Electric Lift



*A*mico

Patient



Improved Communication



Increased Treatment Compliance



Enhanced Security



Stronger Outcomes

Practitioner



Increased Workflow Efficiency



Fewer Mistakes



Less Pain



Reduced Fatigue

Technician



Maximal Uptime



Minimal Maintenance



Fleet Management



Multi-Level Support

Management



Reduced Liability



Better Patient Outcomes



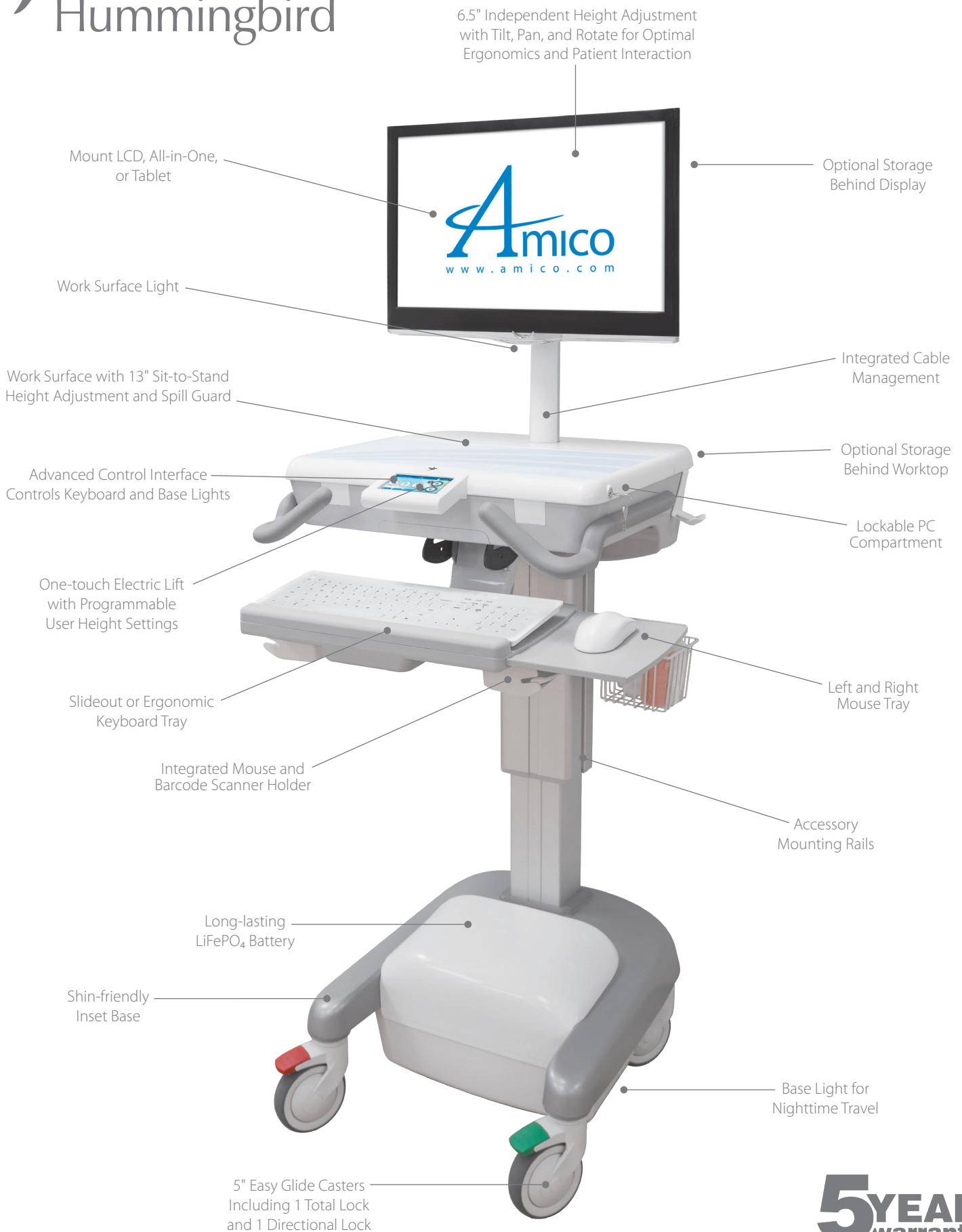
Increased Practitioner Productivity



Superior Management and Integration



Hummingbird



6.5" Independent Height Adjustment with Tilt, Pan, and Rotate for Optimal Ergonomics and Patient Interaction

Mount LCD, All-in-One, or Tablet

Optional Storage Behind Display

Work Surface Light

Work Surface with 13" Sit-to-Stand Height Adjustment and Spill Guard

Integrated Cable Management

Advanced Control Interface Controls Keyboard and Base Lights

Optional Storage Behind Worktop

Lockable PC Compartment

One-touch Electric Lift with Programmable User Height Settings

Slideout or Ergonomic Keyboard Tray

Left and Right Mouse Tray

Integrated Mouse and Barcode Scanner Holder

Accessory Mounting Rails

Long-lasting LiFePO₄ Battery

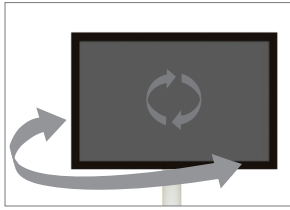
Shin-friendly Inset Base

Base Light for Nighttime Travel

5" Easy Glide Casters Including 1 Total Lock and 1 Directional Lock

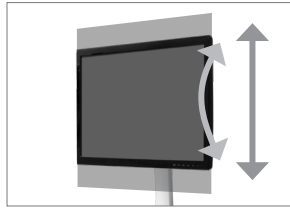
5YEAR warranty

Hummingbird Standard Equipment



Display Movement

+/-90° screen panning and rotation for workflow, patient interaction, and visibility during travel



Display Ergonomic Adjustment

Independently adjust monitor height without tools for optimal ergonomic positioning: 6.5" (16.51 cm) height and +/- 15° tilt range



Cable Management

Conceal monitor and accessory cables inside the LCD post to keep them organized and clean



Worktop

18 sq" (1200 cm²) work surface with 8 fl. oz (236.59 ml) spill guard ideal for documentation and medication preparation



Keyboard Light

Illuminated keyboard allows you to work at night without disturbing your patients



Ergonomic Handles

Optimally oriented handles make maneuvering your cart easy and reduces fatigue



Secure I.T.

Secure your CPU or Laptop in our lockable compartment



Barcode Scanner/Mouse Holder

Place your mouse or barcode scanner underneath the keyboard tray to prevent them from falling during travel



Power Cord

6' (1.83 m) coiled power cord for convenient connection to wall outlet



Cord Holder

Neatly store your power supply cord on the side of the cart



Power Reset

Integrated reset button for rebooting your computer system (requires BIOS setting)



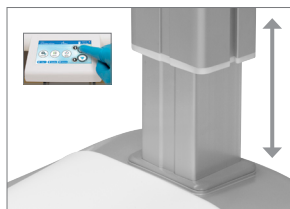
External USB Ports

2 hidden USB ports for connecting auxiliary devices



Accessory Rails

Integrated rails on both sides of the column to easily mount your storage accessories



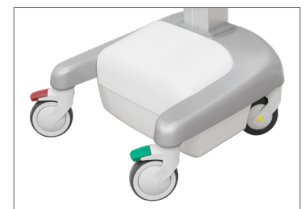
Electric Lift

Sit-to-stand is as easy as pushing a button: 13" (33.02 cm) worktop height adjustment range



Effortless Rolling

5" casters make travel effortless, including directional caster for enhanced steering and total lock caster to stop movement



Legroom

U-Shape base saves your shins while traveling and gives users enough legroom while sitting

Hummingbird Standard Equipment



Base Light

See where you're going with an integrated LED light at the base of the cart



Plug and Play

Ships assembled: add your peripherals/accessories and your cart is ready to use



BirdsEye

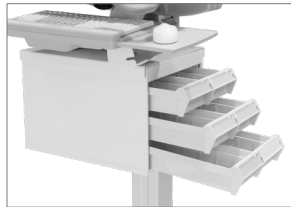
Workstation Management Software for simplifying cart administration and enhanced asset management

Hummingbird Customization Options



LiFePO₄ Battery

3-hour fast charge to ~90% full, 4 hours to full charge from empty
19.2Ahr (230.4Whr)
38.4Ahr (460.8Whr)
57.6Ahr (691.2Whr)



Secure Drawers

A range of drawer configurations and software options to support secure storage



Standard Interface

Controls worktop height, cart lights, and provides battery status and alerts



Advanced Interface

Touchscreen interface displays cart status, customizes user settings, and allows you to control lighting and height



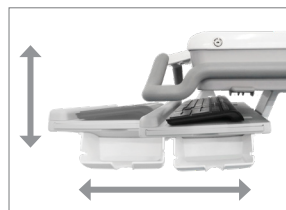
Power System

Power connections available for all countries, choose AC-only or AC/DC power output



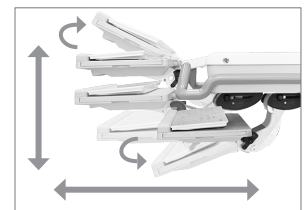
12' Power Cord

12' (3.66 m) extended length power cord for easy access to hard-to-reach outlets



Slideout Keyboard

Pull out or tuck away your keyboard; includes right and left-handed mouse trays



Ergonomic Keyboard Tray

4 ranges of motion such as; tilt, side-to-side, height, and in-and-out for optimal ergonomic positioning and patient orientation



Display (LCD) Mount

VESA Mount for your Display



AIO Mount

VESA Mount for your All-in-One

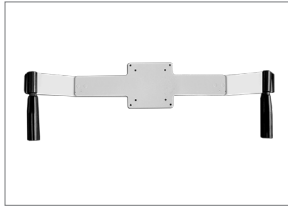


Tablet Mount

VESA Mount for your Tablet Enclosure

Hummingbird Add-On Accessories

Vesa Accessories



Display Handles

Ergonomic handles make screen adjustment more comfortable for practitioners



CPU Mount

Mount your small sized CPU behind the display



Tablet Enclosure

Please contact your sales representative to discuss a range of enclosure options

Perch Storage Bar Accessories



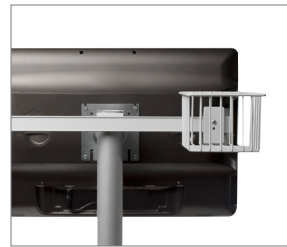
Perch Bar

The Perch Storage Rail mounts behind your display and lets you place frequently-used items close at hand



Barcode Scanner

Mount your wired or wireless barcode scanner beside your display



5" x 5" x 4" Basket

5" x 5" x 4" (12.7 cm x 12.7 cm x 10.16 cm) wire basket for storage



Sharps Container*

Adjustable mount to accommodate common sharps containers



I.V. Hook

Hang I.V. bags behind your screen (2 or 4 hook options available)



Hand Sanitizer Pump Holder*

Securely store your hand sanitizer pump



Hand Sanitizer Dispenser Mount*

Plate for mounting your sanitizer dispenser (ask sales rep about your dispenser type)



Equipment Wipes Holder*

Mounting bracket for your equipment wipes dispenser



Printer Mount*

Mounting plate accommodates commonly used small printers including Zebra QL220

*contact your sales rep for options and availability

Hummingbird Add-On Accessories

Bump Storage Accessories



Bump Storage Bar

The Bump Storage Rail mounts behind your worktop and lets you place frequently-used items close at hand



Universal Sharps Container*

Adjustable mount to accommodate common sharps containers



Hand Sanitizer Dispenser Mount*

Mounting plate for your sanitizer dispenser (ask sales rep about your dispenser type)



Equipment Wipes Mount*

Mounting bracket for your equipment wipes dispenser



Glovebox Holder*

Storage for boxes of gloves (works with tissue boxes too)

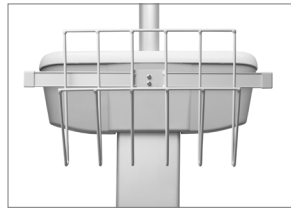
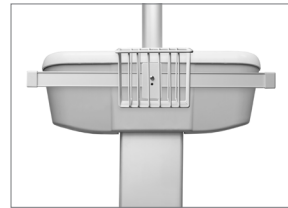


Chart Holder*

Locate your charts close at hand, behind the worktop



Wire Basket*

5" x 5" x 4" (12.7 cm x 12.7 cm x 10.16 cm) wire basket for storage



Diagnostic Station*

Add any combination of otoscope/ophthalmoscope station, specula dispenser, aneroid, and thermometer

Worktop Accessories



Worktop Light

Illuminated worktop enables nighttime charting and medication preparation, without disturbing your patients



RFID

RFID embedded in the worktop facilitates secure PC access and enhanced infection control



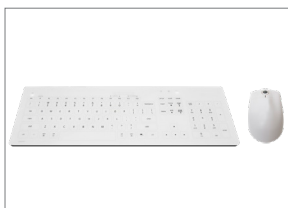
USB Splitter

4-Port USB Splitter for extra devices



USB Extension

Extends the reach of your USB by 3' (91.44 cm)



Antimicrobial Keyboard and Mouse

Antimicrobial keyboard and mouse (ask sales rep for options)



Compartment Fan

Add a fan inside the ventilated worktop to keep your CPU extra cool



Custom Label

Personalize your carts with a worktop surface label of your choice

*contact your sales rep for options and availability

Hummingbird Add-On Accessories

Vertical Rail Column Accessories



Storage Drawers

Add up to three tiers of storage, choose one wide, two medium, or four slim drawers



Drawer Locks

Key, mechanical, or digital combination locks are a great way to keep your items secure



Baskets

Sterilizable Wire Baskets
10" x 6" x 9" (25.4 cm x 15.24 cm x 22.86 cm)
13" x 9" x 7" (33.02 cm x 22.86 cm x 17.78 cm)



Cuff Baskets

Sterilizable Wire Baskets
13" x 9" x 7" (33.02 cm x 22.86 cm x 17.78 cm)



Printer Shelf

Open storage for your printers
small 6" x 6" (15.24 cm x 15.24 cm)
medium 12" x 12" (30.48 cm x 30.48 cm)
large 12" x 20" (30.48 cm x 50.8 cm)



Glovebox Holder

Storage for boxes of gloves
(works with tissue boxes too)



Sanitizer Holder

Securely store your sanitizer pump



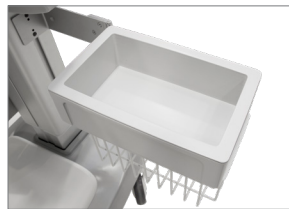
Wipes Holder

Mounting bracket for your equipment wipes dispenser



Universal Sharps Holder

Adjustable mount to accommodate common sharps containers



Waste Bin

Store waste on the cart