

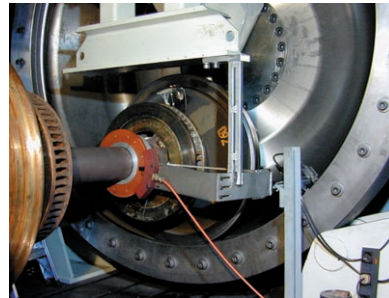
Advanced turnkey telemetry systems to measure physical parameters on rotating test stand components e.g.

- Torque on drive train test stands
- Temperature on brake test stands
- Torque, angular position, force, pressure and temperature on clutch test rigs
- Torque, force and temperature on gear box test stands
- Temperature, pressure and strain on tire- and wheel test stands
- Strain on railroad wheel-set test rigs
- Temperature and force on bearing and seal test rigs
- Temperature and strain on high-speed spin testers

Reliable telemetry systems for permanent installation in test stand applications with severe operating conditions

Suitable for R&D, Structural Durability Surveys and Quality Assurance

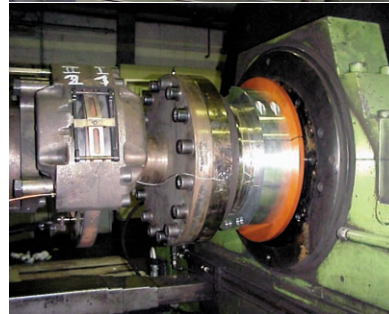
# Test Stand Instrumentation



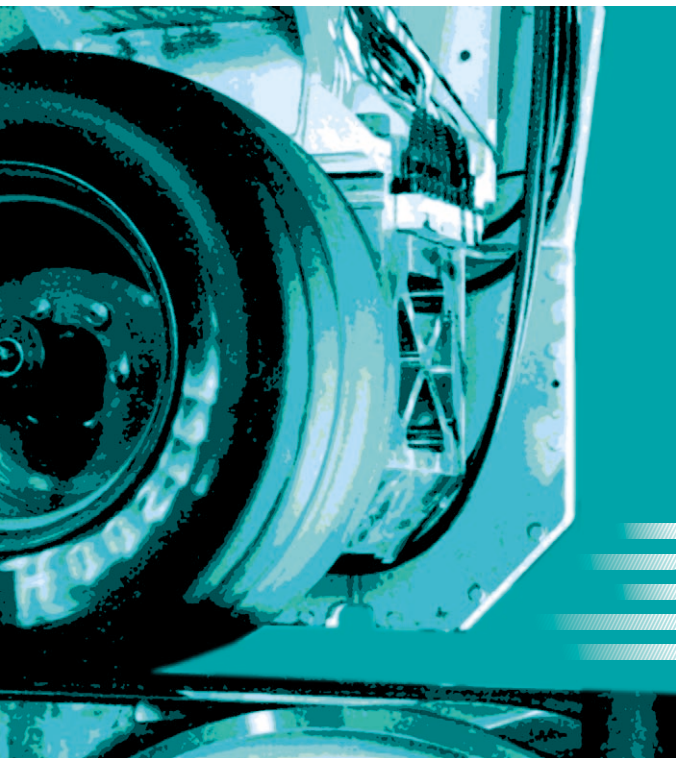
Load measurement on wheel-set test rig, 8-channel telemetry system mounted on train axle



Torque measurement on pump test rig

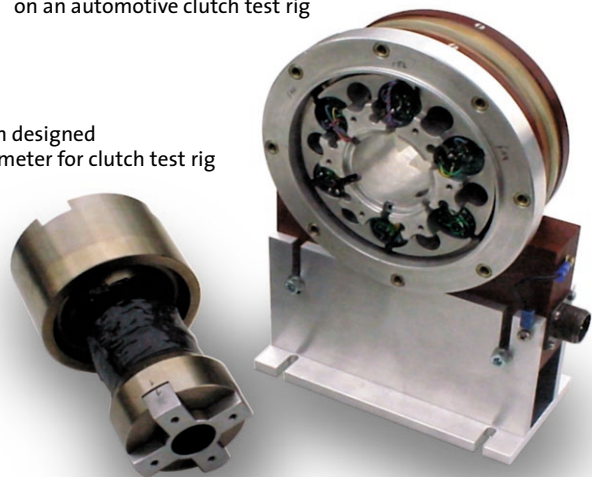


Temperature measurement on brake test stand



Telemetry system for testing of torque, angular position and temperature on an automotive clutch test rig

Custom designed torquemeter for clutch test rig



[www.datatel-telemetry.com](http://www.datatel-telemetry.com)

**datatel**  
TELEMETRY